

Cadify tutorials

Installation and Login

GOAL OF THIS TUTORIAL

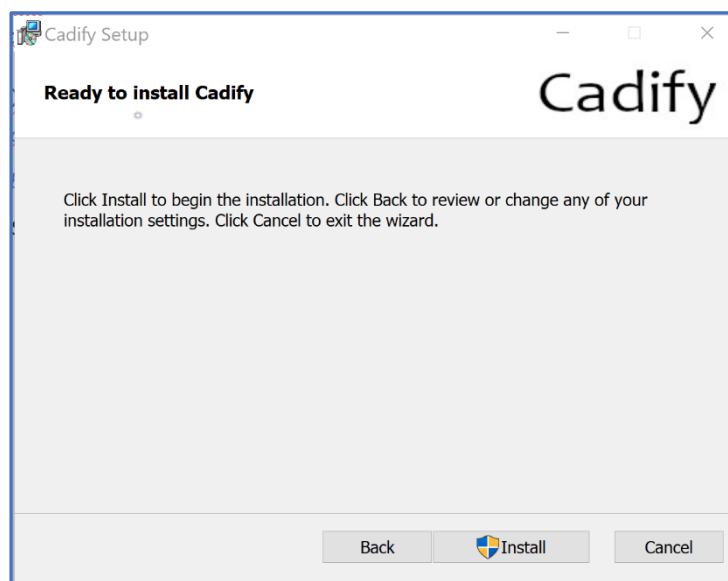
Learn how to install Cadify and login in nopCommerce

DOWNLOAD AND INSTALL CADIFY

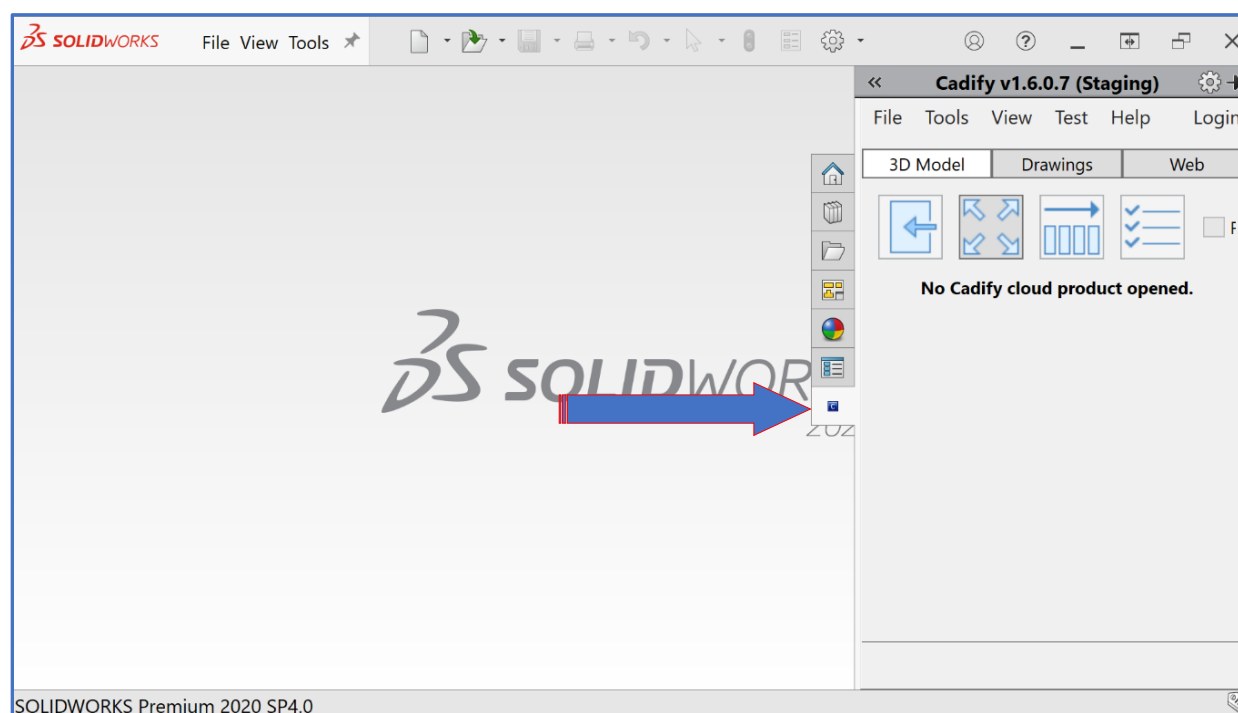
Solidworks 2020 or higher must be already installed. Microsoft Excel 365 or 2019 (or higher) must be already installed.

Solidworks must be closed before and during the installation.

- Download *CadifySetup.msi* and execute.

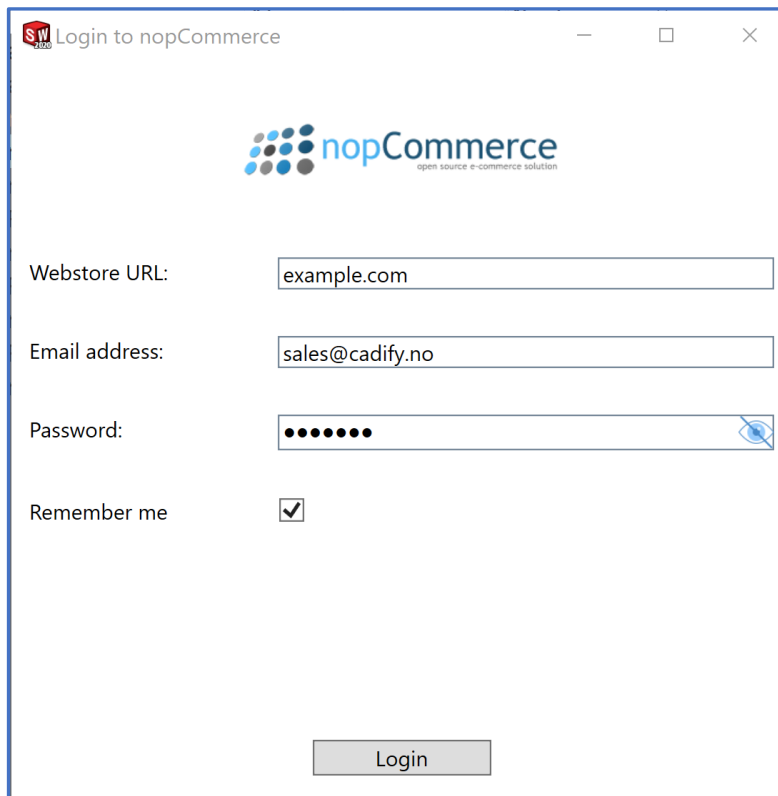
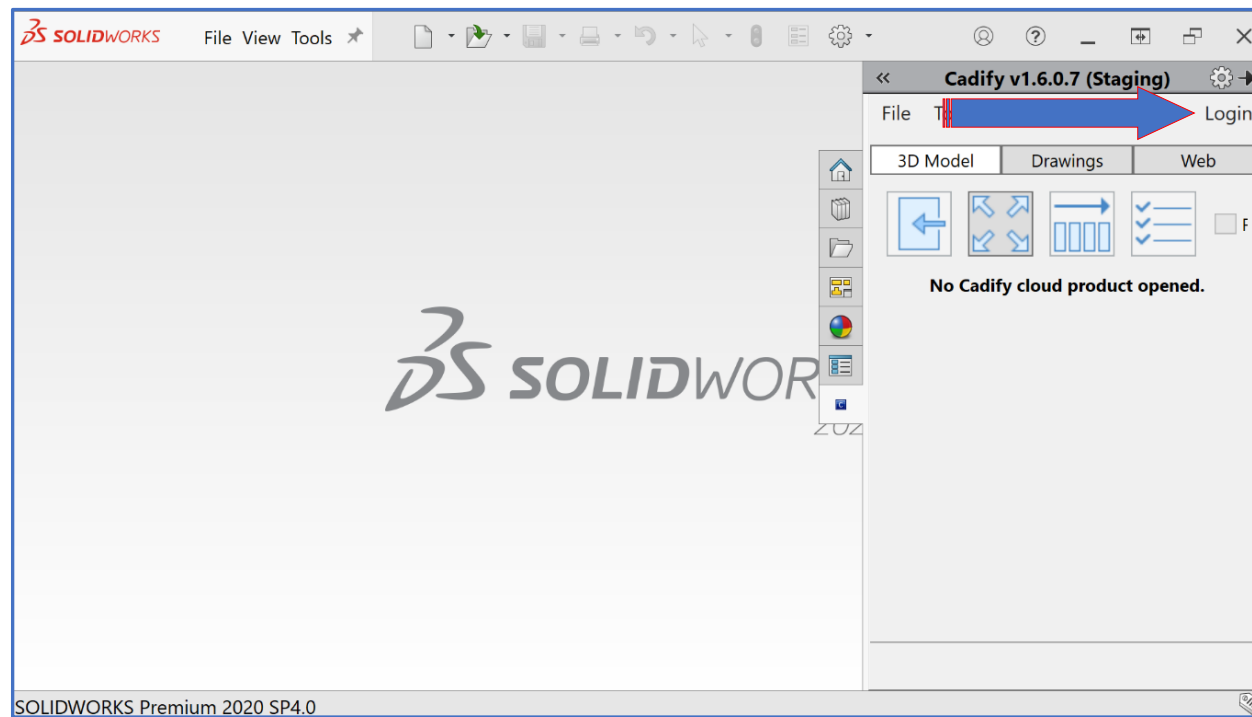


- After installation is done, open Solidworks. The Cadify tab should be visible in the right panel.




LOGIN IN nopCommerce

Login credentials are only available by manually sending an email to jorn@cadify.no. A webstore/site and password will be assigned in return.



SW Login to nopCommerce

 nopCommerce
open source e-commerce solution

Webstore URL:

Email address:

Password:

Remember me